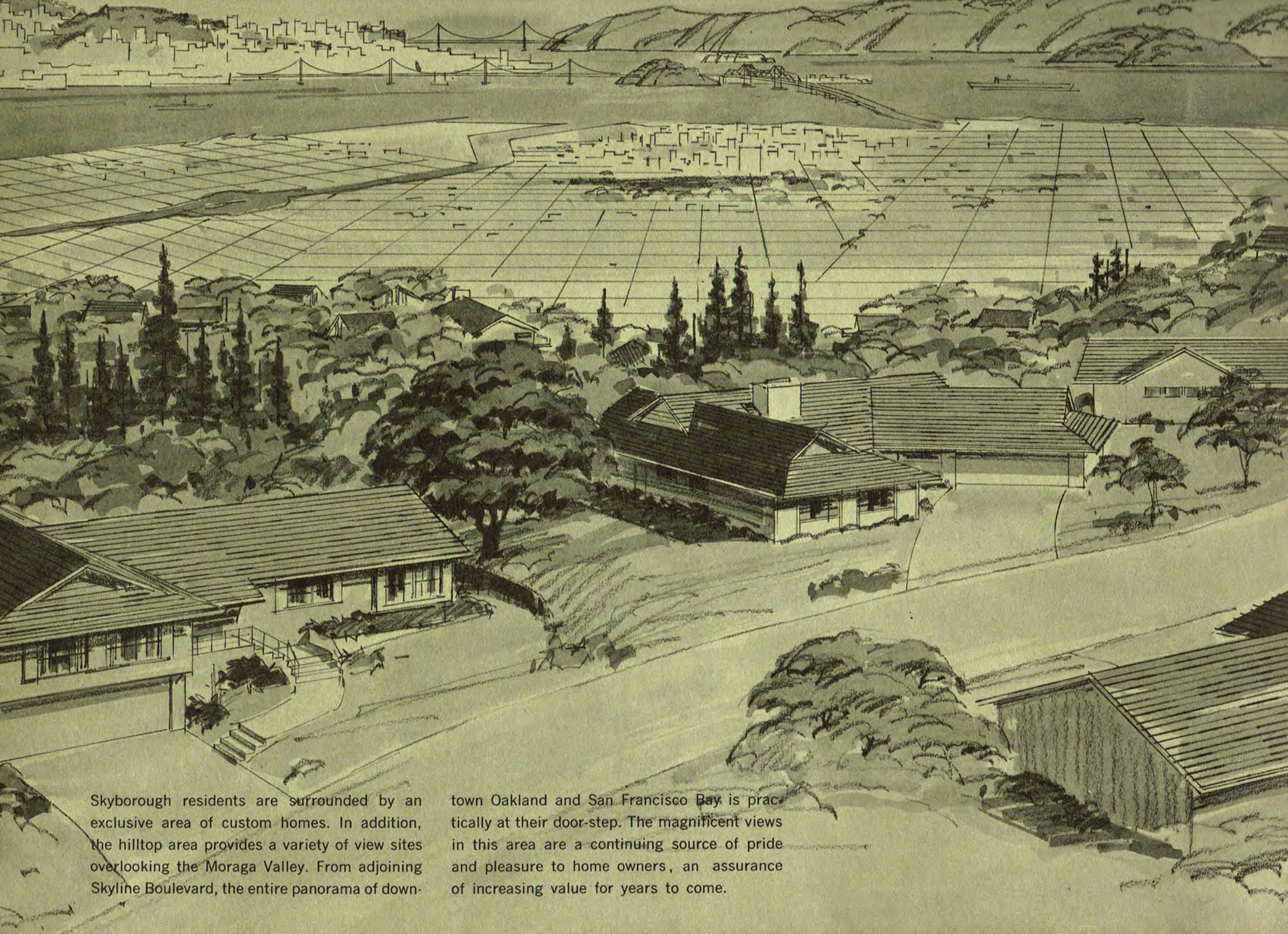




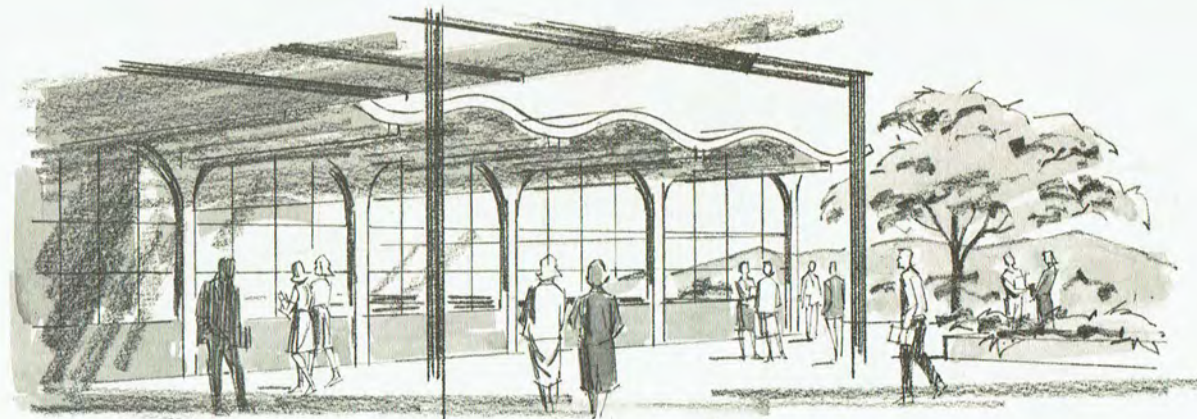
**SKY BOROUG**



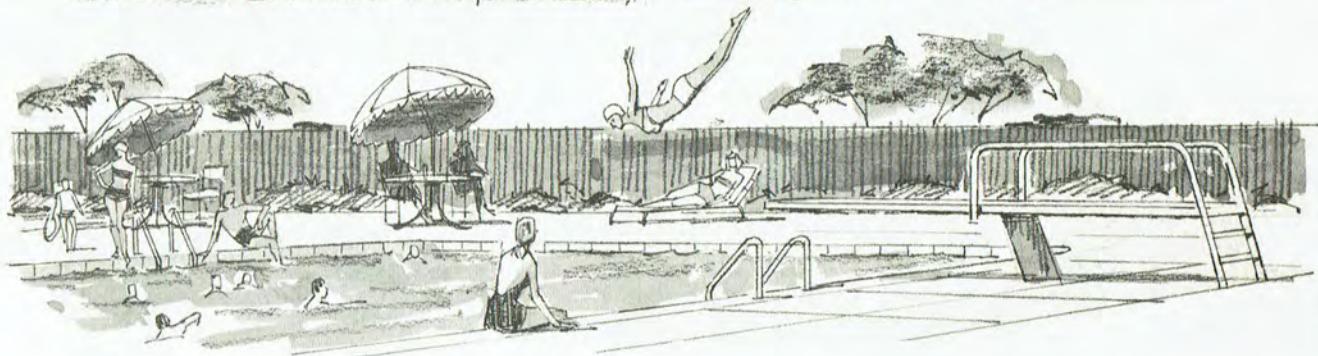
Skyborough residents are surrounded by an exclusive area of custom homes. In addition, the hilltop area provides a variety of view sites overlooking the Moraga Valley. From adjoining Skyline Boulevard, the entire panorama of down-

town Oakland and San Francisco Bay is practically at their door-step. The magnificent views in this area are a continuing source of pride and pleasure to home owners, an assurance of increasing value for years to come.

**SCHOOLS:** In Skyborough, every age group has access to excellent new schools that are convenient to this superb home locale. It's just a short walk to Skyline High School.



**PARKS AND PLAYGROUNDS:** The vast East Bay Regional Park District is just minutes from Skyborough and offers families enjoyment of an endless variety of leisure-time activities.



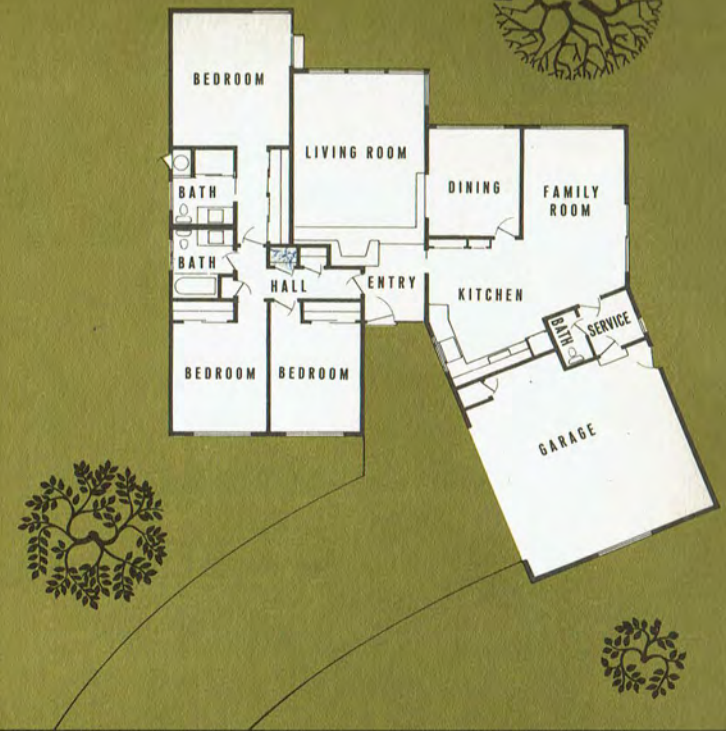
**RECREATION:** Riding academies and bridle paths abound in this hilltop area. The pleasant mild climate is ideal for a host of other year-round recreational pursuits such as tennis, golf, hiking, gardening.



**SHOPPING:** A complete neighborhood shopping center provides everything for day-to-day family needs. Downtown specialty shops and department stores are only moments away by fast Freeway to Oakland or San Francisco.

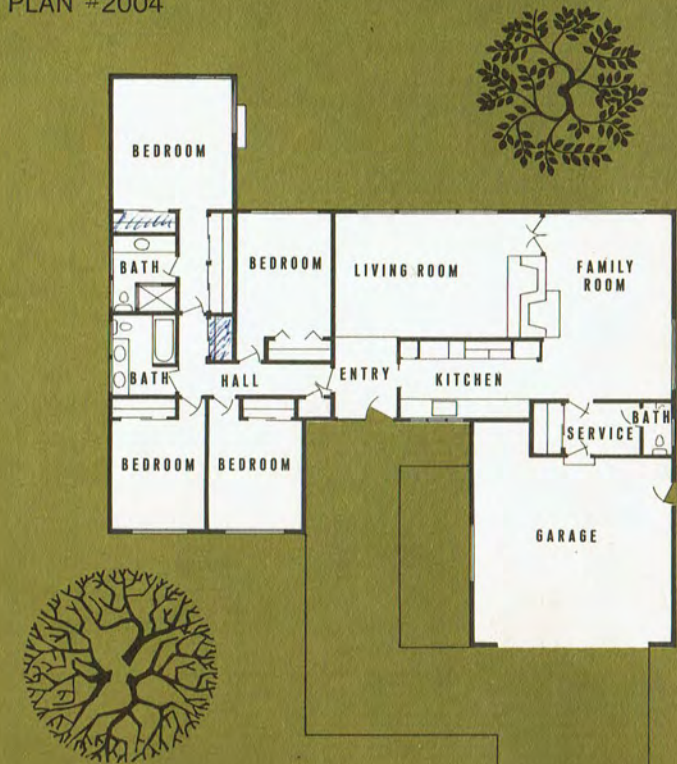


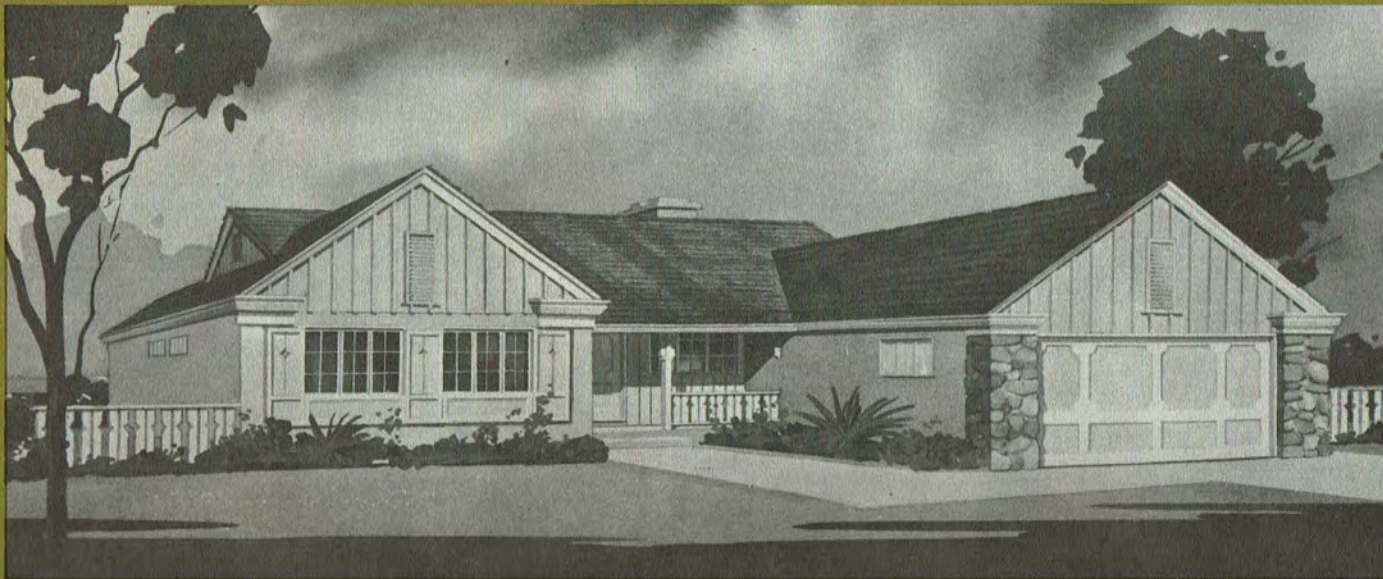
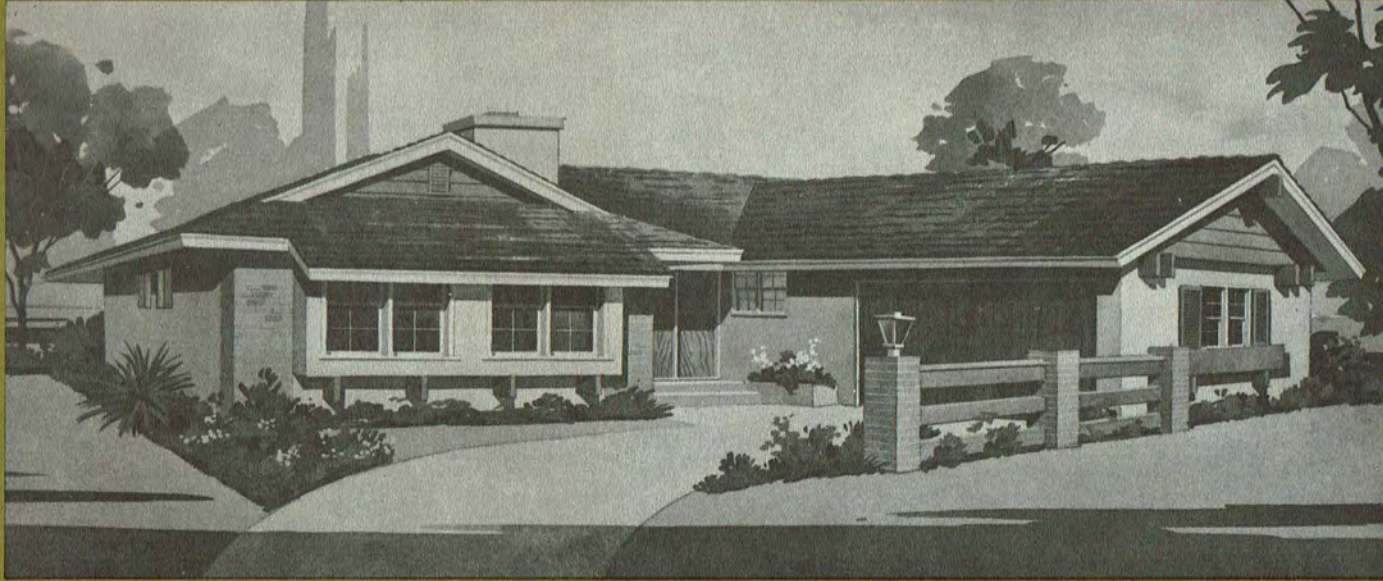
**Excellent planning and good design** are evident throughout this functional and efficient floor plan. Bedroom wing affords complete privacy, activity areas are perfectly arranged for day-to-day family life as well as formal or informal entertaining. Kitchen is a dream of luxury and convenience.

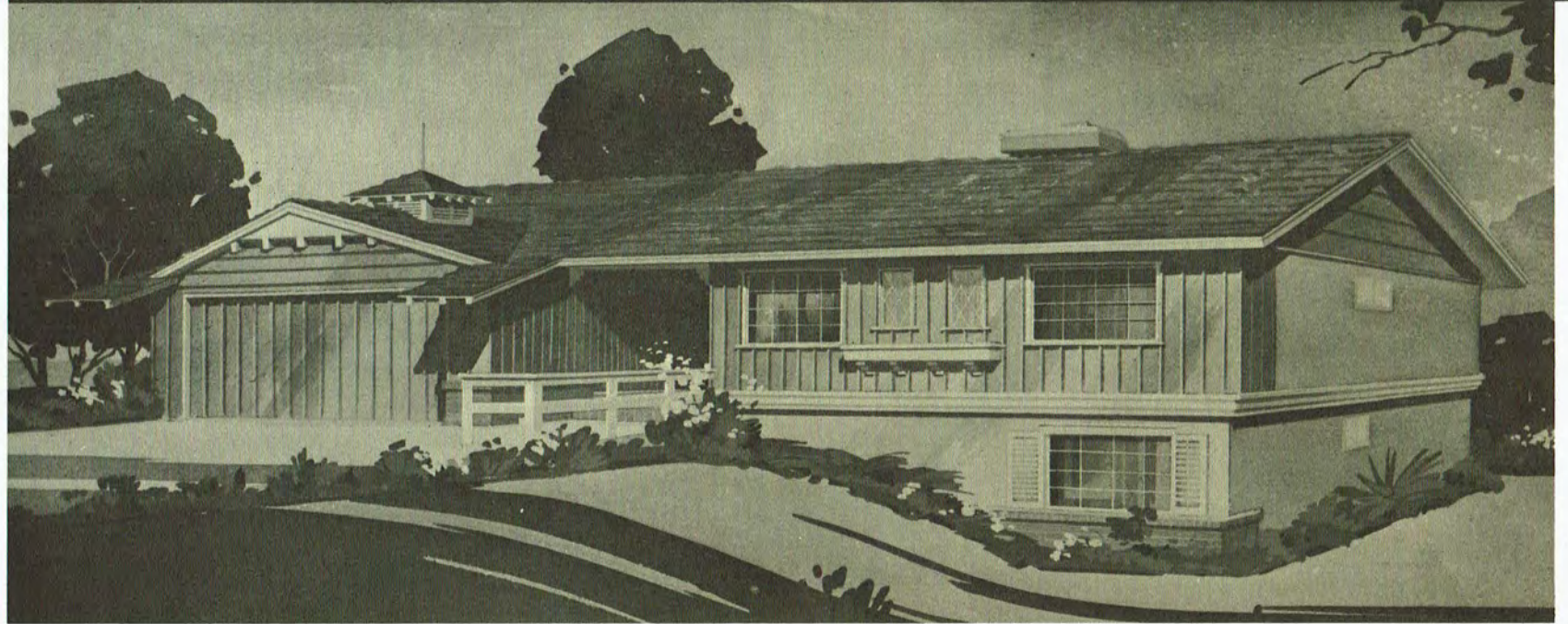
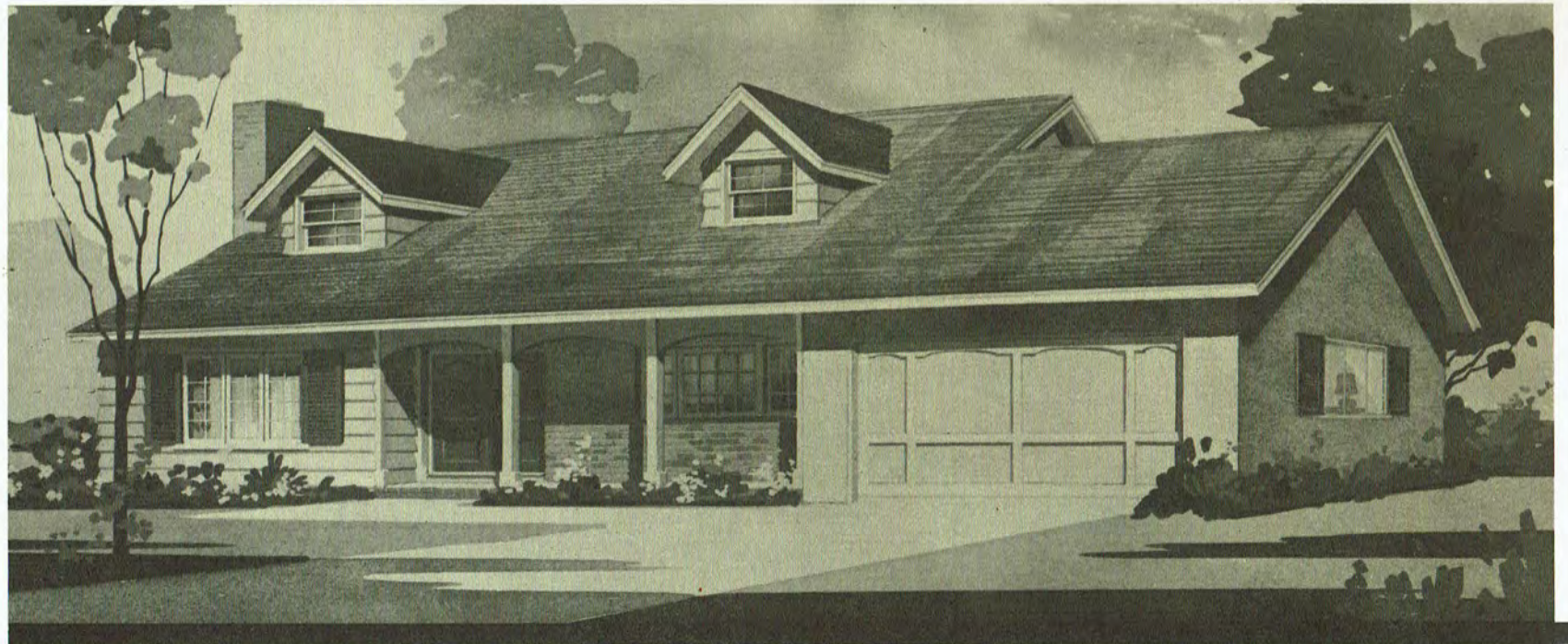


PLAN #2004

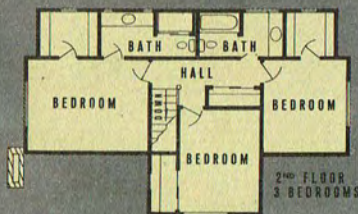
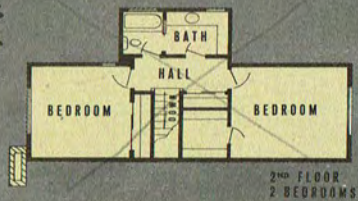
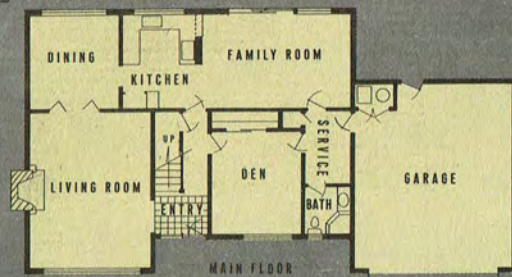
**Luxury and Spaciousness** are the keynote of this handsome 4-bedroom home. .... Both master Bedroom and Family Room have access to the patio and pool area through sliding glass doors. Two fireplaces add charm to Living Room and Family Room. Further good planning is seen in the arrangement separating activity zones and the bedroom wing.





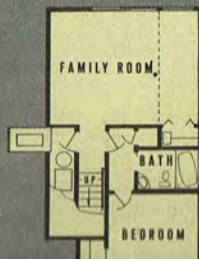
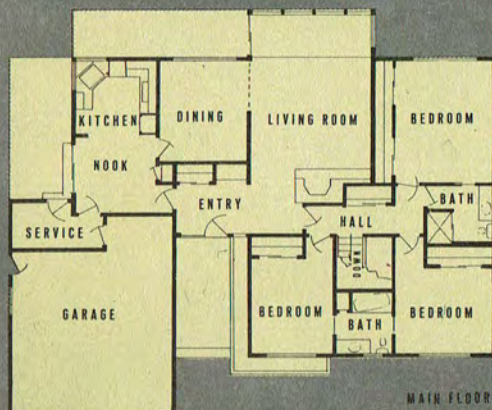


LAN #2002

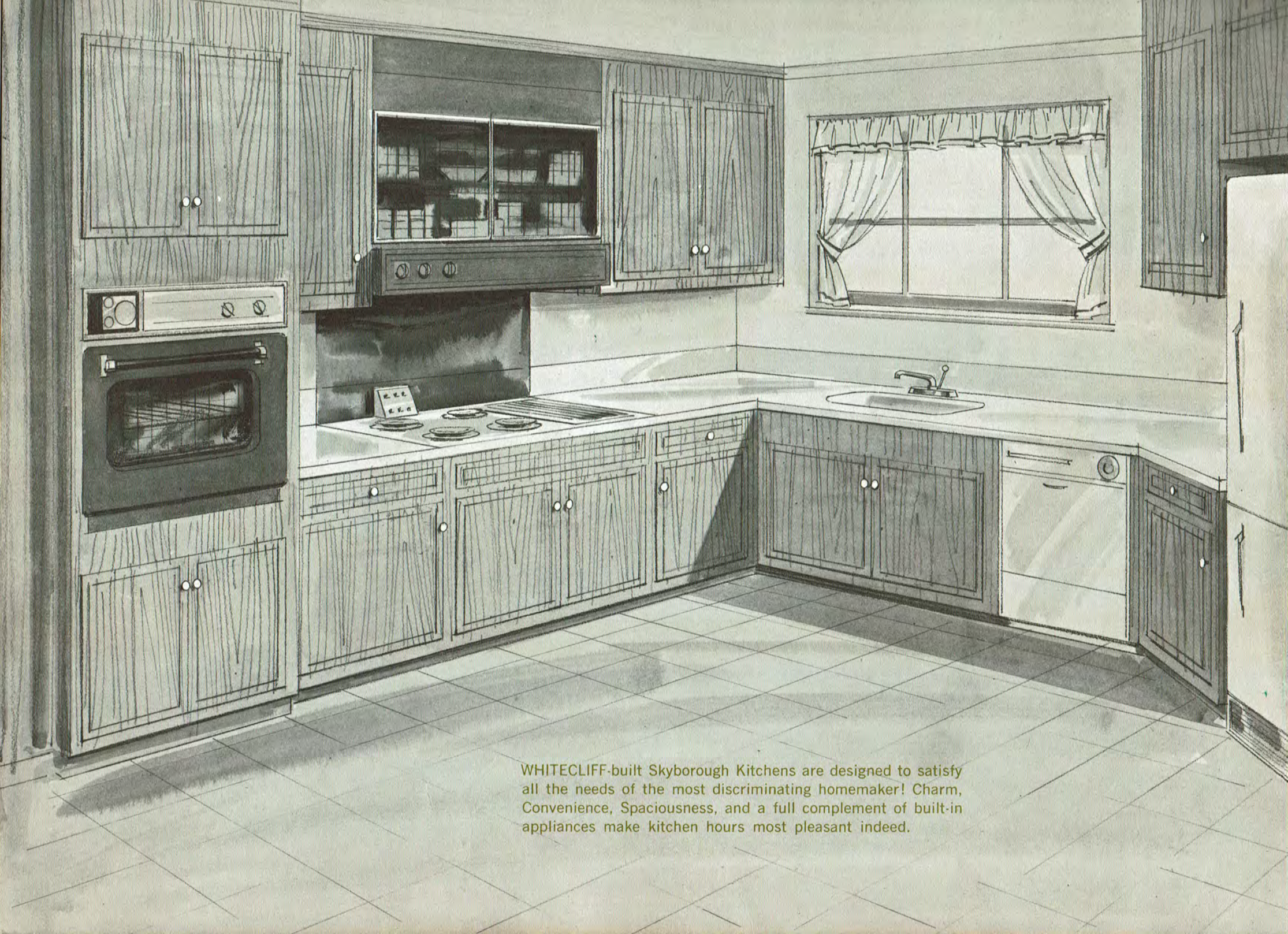


**Spaciousness and individuality** add to the attractiveness of this home, which is adaptable to a variety of family requirements. In this two-story design, there is a choice of either a 4-Bedroom 3-Bath plan, or a 3-Bedroom 2-Bath arrangement. Completely private Den and Bath on the lower floor is suitable for many uses.

LAN #2010



**In this luxurious home,** architectural beauty and a host of custom features provide the ultimate in living pleasure and convenience. A fourth Bedroom and third Bath on the lower level are ideally located for use of live-in help or as a private suite. Activities area has a built-in wet bar which may be concealed by folding doors when not in use.



WHITECLIFF-built Skyborough Kitchens are designed to satisfy all the needs of the most discriminating homemaker! Charm, Convenience, Spaciousness, and a full complement of built-in appliances make kitchen hours most pleasant indeed.

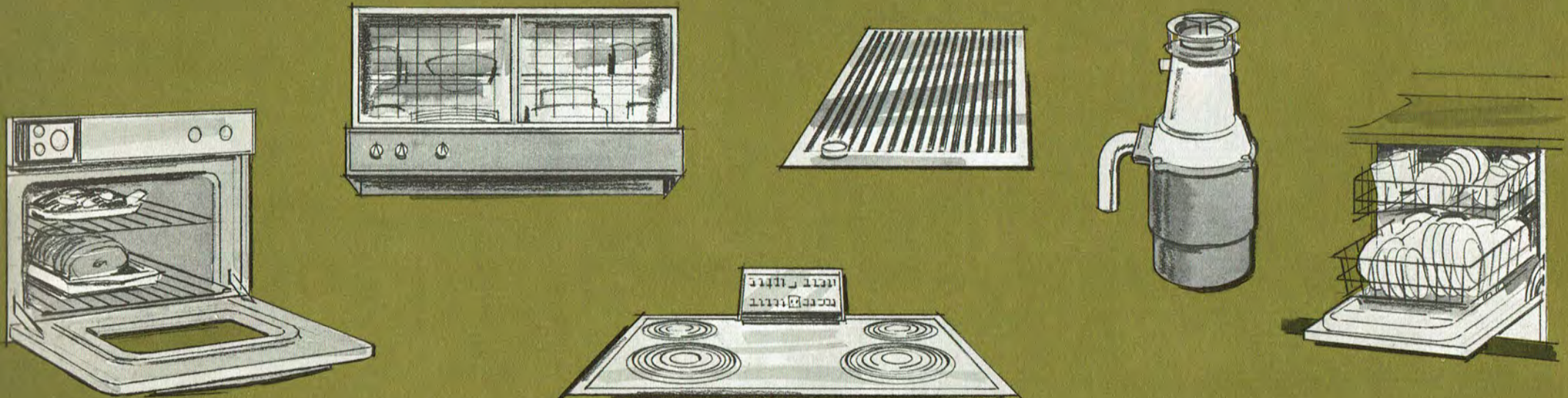


# SKYBOROUGH HOMES FEATURE **Hotpoint** BUILT-IN APPLIANCES

**Warming Oven-hood:** Beautifully designed multi-purpose built-in unit warms dishes, keeps foods hot. Powerful exhaust fan in the lighted hood clears kitchen of smoke and odors—there's even space for a spice rack and extra storage behind etched glass doors.

**Char-broiler:** Electrically operated grill imparts natural smoke flavor to meats, fish or fowl without the mess of charcoal, fire starters, ashes, flare-ups. Controlled heat takes the guesswork out of barbecues.

**Disposall:** Another feature to make kitchen chores easy and more pleasant. Super hard cutting teeth pulverize ALL kitchen wastes. Fast, clean, efficient and QUIET.



**King-size Built-in Oven:** Smart homemakers appreciate the convenience of the automatic cooking provided by this appliance. Use it for a banquet or a snack with the oven timing clock—oven starts automatically, cooks the meal, shuts off automatically. Oven door lifts off for easy cleaning.

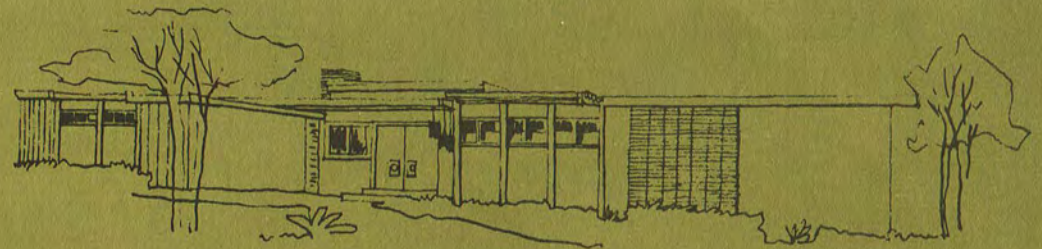
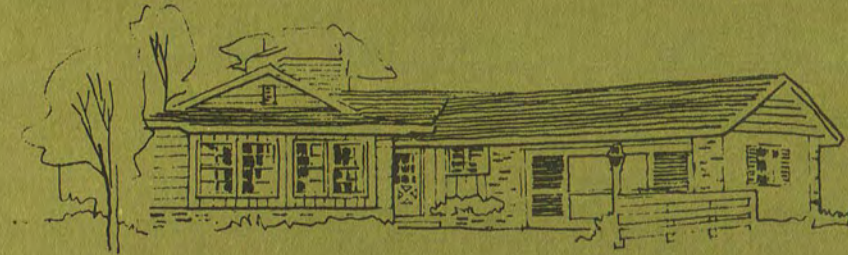
**Built-in Electric Range:** Fast, clean and efficient, this superb cooking unit has its push-button controls in a tower control panel away from spatters and children's fingers. Super-speed CAL-ROD Units heat instantly, cool quickly.

**Dishwasher:** A convenience to delight every homemaker. Dishes come sparkling clean, easy loading racks hold a complete service for 12. Simple and easy to operate.

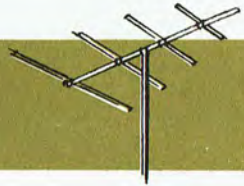
# CUSTOM PLANNED HOMES



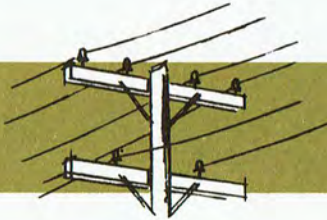
A limited number of spectacular home sites in Skyborough have been reserved for individually designed custom planned homes. These homes further enhance the value of **ALL** properties in this delightful locale. Our Sales Representative can give you information on availability of completed homes and those scheduled for future construction.



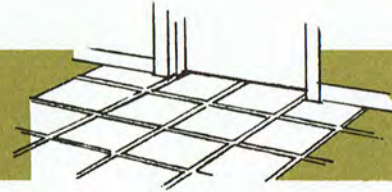
# EXCLUSIVE SKYBOROUGH CUSTOM FEATURES



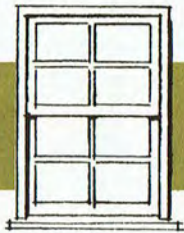
**NO ROOFTOP ANTENNAS** — Every Skyborough home has its own built-in TV antenna system.



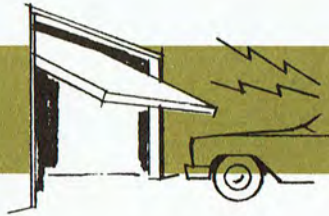
**ALL UTILITIES UNDERGROUND** — No unsightly poles and wires to mar the spectacular views.



**TILE ENTRIES** — Beautiful and practical — with every home having an individualized entry way.



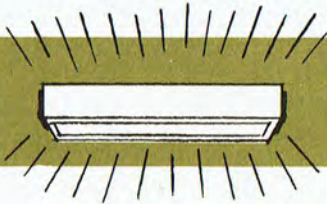
**WOOD CASEMENT WINDOWS** — Interior and exterior decor is highlighted by attractive window treatment.



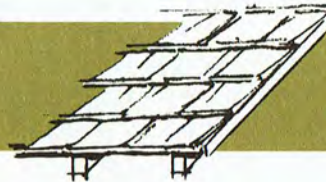
**ELECTRONIC GARAGE DOORS** — Radio controlled — completely automatic — open and close from your car.



**MOEN FIXTURES** — Single unit control for hot and cold water in Kitchen and Baths.



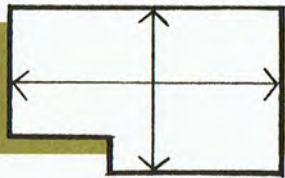
**SOFFIT LIGHTING** — Built-in lighting provides both direct and indirect light for Dressing Rooms and Baths.



**SHAKE ROOFS** — Added quality and styling in a long-lasting roof of time-tested material.



**2½-3 BATHS** — Every home has the added convenience of an extra full or half bath.



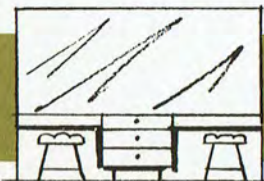
**SPACIOUSNESS** — More square feet of usable living area adds even greater value to these luxury homes.



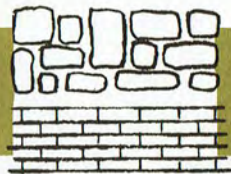
**LARGE FIREPLACES** — A dramatic highlight provided by a variety of finishing materials.



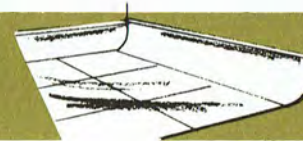
**ARCHITECTURAL FENCING** — Fences blend with home design adding to exterior beauty.



**BUILT-IN VANITIES** — Powder Rooms feature built-in vanities, full plate glass mirrors.



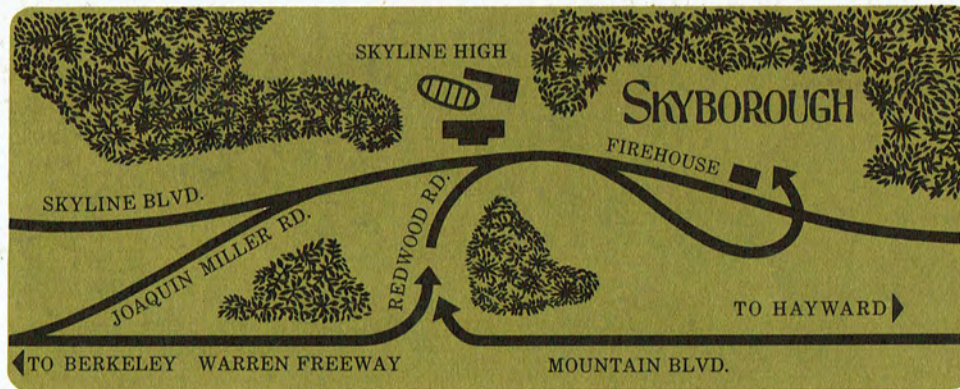
**BRICK AND STONE VENEERS** — Extensive use of decorative brick and stone add glamour to exterior styling.



**COVED VINYL** — High style patterns provide individuality to Kitchen and Bathroom Floors — coved for ease in maintenance.



**Certified Electric Wiring** provides an abundance of electrical outlets for modern lighting as well as a full range of modern appliances.



Skyborough is a choice residential area that offers the best possible environment for pleasant family life. This spectacular suburban setting in the Oakland hills is just minutes from downtown Oakland and other Bay area cities.

**SALES OFFICE - KE 3-5753**